

TEST REPORT

1. Applicant

* Client Name : KH-FEELUX Co. Ltd.
* Address : 235-48 Gwangjeok-ro Gwangjeok-myeon Yangju-si Gyeonggi-do 482-844 Korea
* Date of Receipt : 210805

2. Purpose of Report :**3. Number of Report :****4. Test Standard / Item :** / 210805 DVP-24V-C90-R-5000K 60deg**5. Test Period :** 210805 ~ 210805**6. Test Environment**

* Ambient Temp. : 27.3 +- 3 °C
* Relative Humidity : 67.1 +- 10 % RH

7. Test Item

* Name of Product :
* Rating :
* Model :

8. Test Result : Refer to the attachment

Confirmation	Test by		Technical manager	
	JSY	Sign	JSY	Sign

- * The result shown in this test report refer only to the sample(s) tested unless otherwise stated.
- * This report cannot be reproduced, except in full.
- * This report is for reference only. It cannot replace the report by standard organization(s).

Result

Report Number	Sample Name	Sample Number	Test Standard

Test Item	Unit	Result	Notice
Beam Distribution Test		See Attachement	
ATHD	%	0.0	
CIE 1931 Cx, Cy		0.3506 , 0.3601	
Correlated Color Temperature	K	4828	
Ra		91.38	
Power Factor		1.000	
Input Voltage	V	24.000	
Input Current	A	0.108	
Input Watt	W	2.59	
Lamp Flux	lm	202.6	
Efficient	lm/W	78.16	
luminous Intensity (Max , Center)	cd	306 , 281	
Illuminance	lx	281	1 m
		70	2 m
		31	3 m

* This test result is for the sample provided by the client.

* Sample photo

Click to load image

Luminaire

Lamp

No. of lamps 1

Voltage (V)

Report

24Filename 210805 DVP-24V-C90-R-5000K 60deg.jdt

Lamp flux (lm) 203

Current (A)

0.108Operator

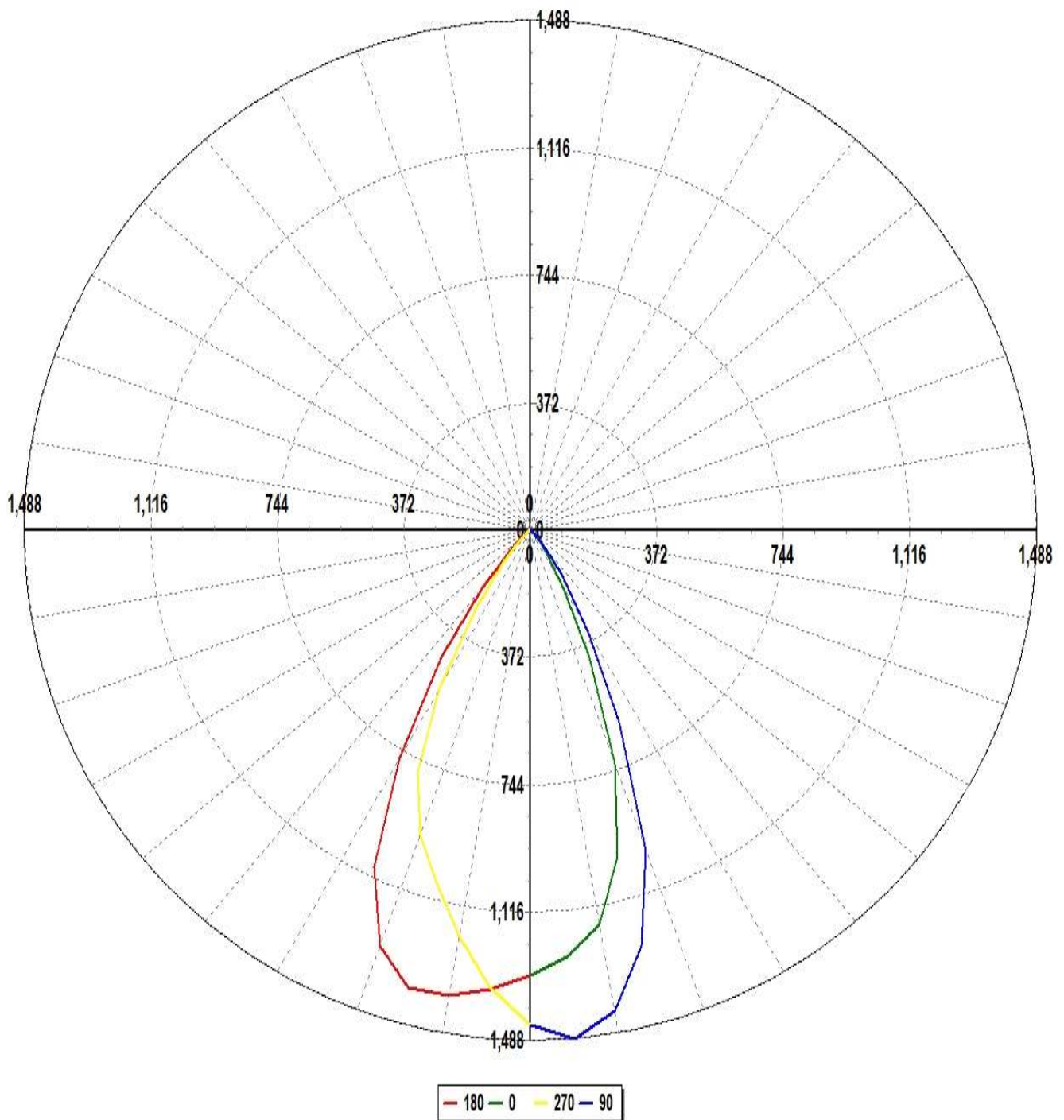
Total flux (lm) 203

Power Factor

1Date

2021-08-05 오후 12:12:43

Luminous Intensity Distribution



Luminaire

Lamp

No. of lamps 1

Lamp flux (lm) 203

Total flux (lm) 203

Voltage (V)

Current (A)

Power Factor

Report

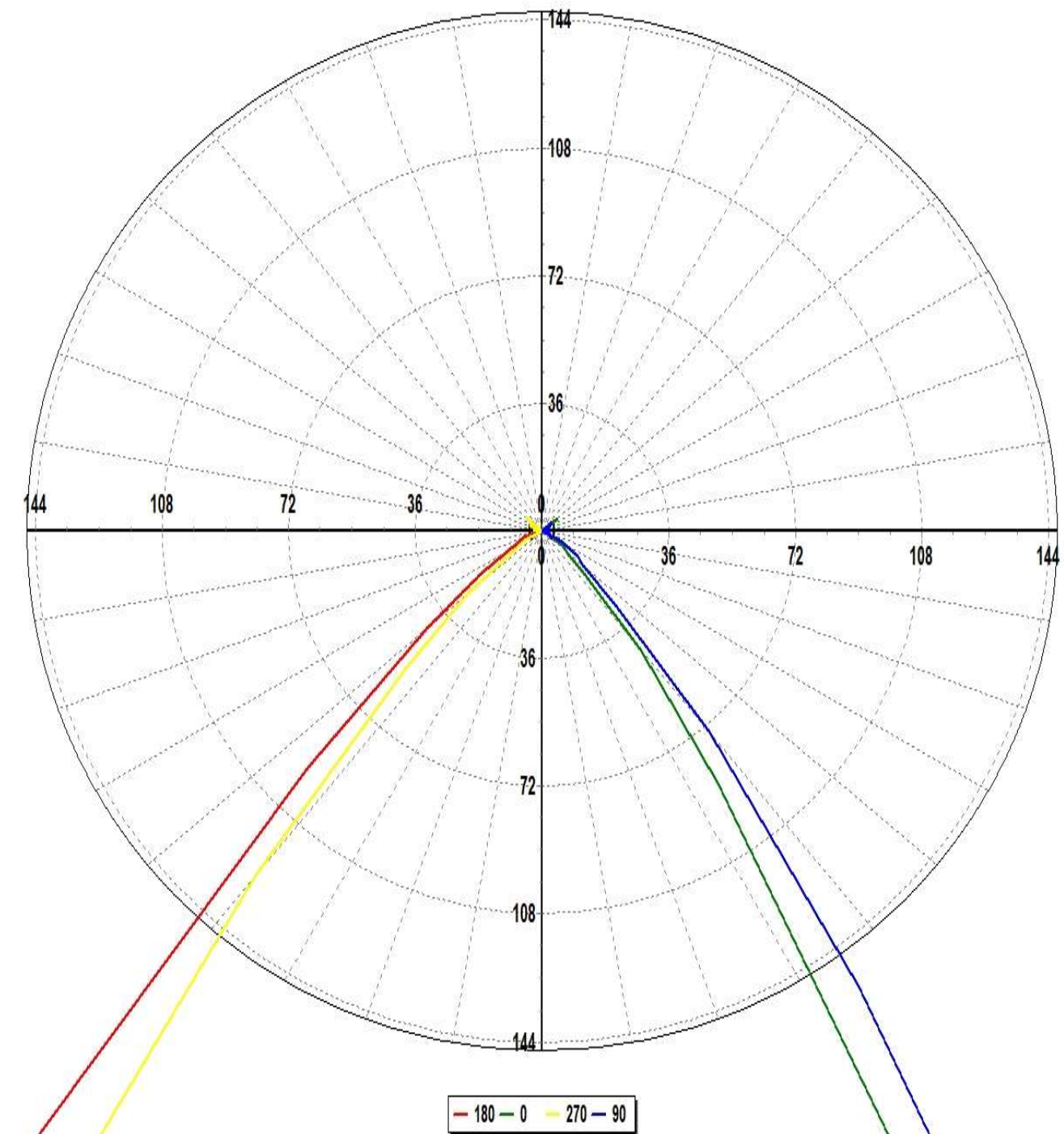
24Filename 210805 DVP-24V-C90-R-5000K 60deg.jdt

0.108Operator

1Date

2021-08-05 오후 12:12:43

Luminous Intensity Distribution (Lowest 10%)



Luminaire

Lamp

No. of lamps	1	Voltage (V)	24	Filename	210805 DVP-24V-C90-R-5000K 60deg.jdt
Lamp flux (lm)	203	Current (A)	0.10	Operator	
Total flux (lm)	203	Power Factor	1	Date	2021-08-05 오후 12:12:43

Luminous Intensity Data

Maximum (cd) : 306

Minimum (cd) : -1

G/C	0	5	10	15	20	25	30	35	40	45	50
0	264.13	264.88	267.08	266.82	269.62	272.09	273.59	275.13	278.61	279.02	281.1
5	254.29	254.42	258.05	259.81	263.28	265.19	270.48	270.72	275.66	279.53	281.99
10	236.98	239.04	243.69	246.23	249.97	253.07	257.22	260.71	264.72	268.59	272.54
15	200.04	202.98	208.1	210.06	216.06	216.2	224.07	225.95	230.62	233.11	237.95
20	147.46	149.27	155.58	157.35	163.91	164.87	171.74	173.28	178.64	178.41	182.24
25	83.31	84.16	89.55	90.34	95.22	97.29	102.42	103.75	107.91	108.78	112.06
30	39.87	40.66	43.4	43.64	46.87	48.52	52.58	52.56	56.83	57.65	60.75
35	17.71	18.02	18.43	18.21	19.96	21.59	23.18	23.87	26.8	26.8	28.92
40	8.91	8.98	9.31	9.43	9.95	10.35	11.4	12.05	12.41	13.45	14.83
45	3.33	5.1	5.25	4.8	5.28	4.54	5.8	5.43	6.24	6.77	6.78
50	1.93	2.32	2.58	2.54	2.83	3.1	3.03	2.51	2.73	3.18	3.11
55	1.52	0.63	1.25	0.97	1.93	1.37	2.4	1.61	1.9	1.42	1.72
60	0.55	0.33	0.88	0.78	0.52	0.58	0.29	0.61	1.26	0.62	0.96
65	-0.83	0.52	-0.08	-0.19	-0.06	0.15	0.2	-0.1	0.23	-0.64	0.06
70	-0.56	-0.51	0.03	0.13	-0.01	0.08	-0.11	0.17	0.45	0.26	-0.52
75	0	-0.41	-0.08	-0.14	0.29	0.57	-0.05	0.08	-0.1	-0.77	0.08
80	-0.33	-0.07	-0.34	0.17	-0.01	-0.22	0.28	-0.3	-0.53	-0.04	-0.69
85	-0.14	0.35	-0.16	-0.14	-0.19	-0.89	0.02	-0.13	0.28	-0.22	0.37
90	-0.21	0.33	-0.21	0.08	-0.19	-0.1	0.08	-0.41	0.33	0.09	0.41
95	0.36	0.16	0.21	0.25	0.27	0.42	0.06	0.2	0.22	0.16	0.35
100	-0.04	-0.07	-0.41	-0.14	-0.07	0.2	-0.28	-0.17	-0.49	-0.28	0.22
105	0.25	-0.41	-0.12	-0.1	-0.46	0.02	-0.02	-0.03	0.39	-0.03	-0.39
110	-0.28	0.1	0.28	0.19	0.3	0.32	-0.03	0.13	0.51	0.32	-0.01
115	0.29	0.23	0.46	0.49	0.37	0.21	-0.02	0.44	0.47	0.7	-0.18
120	0.53	0.2	0.49	0.54	0.36	0.17	-0.21	0.68	0.15	0.47	0.2
125	0.62	0.53	0.85	0.4	0.68	0.2	0.53	0.87	0.5	0.79	0.74
130	1.16	0.55	0	0.81	0.85	0.68	0.86	0.2	0.71	1.09	0.96

Luminaire

Lamp

Report

No. of lamps	1	Voltage (V)	24	Filename	210805 DVP-24V-C90-R-5000K 60deg.jdt
Lamp flux (lm)	203	Current (A)	0.10	Operator	
Total flux (lm)	203	Power Factor	1	Date	2021-08-05 오후 12:12:43

Luminous Intensity Data (Continued)

Maximum (cd) : 306

Minimum (cd) : -1

G/C	55	60	65	70	75	80	85	90	95	100	105
0	282.4	283.78	286.32	290.61	289.9	290.76	293.04	292.98	293.63	294.49	294.77
5	285.48	288.22	291.4	293.17	297.15	297.25	299.01	302.41	302.49	302.31	304.07
10	275.14	279.18	281.32	282.27	287.42	286.46	286.32	289.28	290.38	292.43	294.75
15	239.34	243.88	246.62	248.65	251.64	253.18	254.1	255.65	256.49	258.49	257.24
20	182.81	188.02	188.57	192.58	194.93	197.33	198.05	201.95	200.65	202.58	201.38
25	112.77	116.69	116.67	120.82	120.54	122.98	122.23	125.86	124.5	127.86	126.71
30	60.33	63.57	63.87	65.32	64.61	67.03	65.97	68.56	66.64	68.86	67.03
35	29.56	31.33	30.84	32.08	31.17	31.84	31.12	31.88	30.61	31.55	30.96
40	14.14	15.79	15.54	15.38	14.81	16.02	14.73	15.02	14.25	14.04	14.4
45	6.9	7.28	7.38	8.27	7.21	6.95	6.47	6.18	6.72	6.47	6.17
50	2.97	3.1	3.02	3.85	3.81	3.69	3.57	2.98	3.67	3.38	3.56
55	1.06	2.18	1.84	1.89	1.31	2.38	1.92	2.53	2.95	1.7	2.12
60	0.84	0.74	1.54	0.74	0.84	1.23	0.79	1.33	1.47	0.69	1.19
65	0.35	0.31	-0.2	0.74	0.04	0	-0.12	0.03	0.44	0.2	-0.17
70	-0.27	0.51	-0.25	-0.18	0.41	-0.16	0.4	0.27	0.66	0.35	0.34
75	0.1	0.08	-0.17	-0.55	-0.25	-0.25	0.35	0.48	-0.45	-0.29	-0.44
80	0.22	-0.16	-0.15	0.36	0	0.25	0.1	-0.05	0	0.28	0.26
85	0.22	0.09	-0.29	0.1	-0.38	0.05	0.5	-0.26	-0.24	0.41	0.4
90	0.28	-0.04	0.38	0.2	-0.26	0.32	0.18	0.4	-0.07	0.86	0.13
95	-0.44	0.32	-0.52	-0.14	-0.04	0.31	0.03	-0.66	0.2	0.32	-0.34
100	0.05	0	-0.81	0.05	0.1	0.18	0.44	-0.9	-0.17	0.61	-0.02
105	-0.57	0.76	-0.03	0.32	-0.12	-0.73	0	0.09	0.26	-0.19	0.3
110	-0.15	0.38	0.09	0.77	-0.13	0.33	0.56	0.08	0.79	0.36	0.6
115	0.06	0.65	0.43	0.19	0.16	0.89	0.27	0.42	0.53	0.49	0.28
120	0.09	-0.17	0.06	0.15	0.08	0.38	0.59	0.43	-0.62	0.86	0.29
125	0.6	0.01	0.79	0.33	0.33	0.42	0.15	0.63	0.2	0.71	0.48
130	0.72	0.41	1.27	-0.09	1.38	0.49	0.42	0.7	0.56	1.21	1.07

Luminaire

Lamp

Report

No. of lamps	1	Voltage (V)	24	Filename 210805 DVP-24V-C90-R-5000K 60deg.jdt
Lamp flux (lm)	203	Current (A)	0.10	Operator
Total flux (lm)	203	Power Factor	1	Date 2021-08-05 오후 12:12:43

Luminous Intensity Data (Continued)

Maximum (cd) : 306

Minimum (cd) : -1

G/C	110	115	120	125	130	135	140	145	150	155	160
0	294.74	296.23	295.63	295.16	294.86	293.68	293.19	292.89	290.06	287.81	289.87
5	304.09	302.31	304.56	305.59	303.99	303.52	301.68	300.76	298.44	299.12	292.13
10	294.28	294.5	295.24	294.94	295	291.48	291.3	288.17	287.53	281.3	279.92
15	260.53	258.92	262.11	257.44	258.95	254.96	251.92	249.31	245.96	240.19	243.09
20	202.97	199.8	203.94	196.87	197.8	191.36	190.43	184.43	183.32	176.24	173.84
25	129.32	126.39	128.06	124.47	125.4	121	119.79	114.95	113.61	107.66	107.11
30	70.19	68.15	69.9	67.77	66.71	64.68	64.51	60.25	59.5	56.07	54.83
35	32.17	30.91	32.39	31.39	31.72	30.89	30.49	27.81	27.58	25.08	23.95
40	14.92	14.28	14.08	14.02	13.92	13.7	13.82	12.17	11.9	11.09	11.61
45	6.97	5.99	7.21	6.76	6.55	6.08	5.57	5.12	5.89	4.74	5.21
50	3.02	3.18	3.12	2.69	2.88	3.04	3.07	3.1	2.83	2.62	2.04
55	1.67	1.61	1.56	2.32	2.2	2.01	1.95	1.7	1.47	1.9	1.4
60	1.37	0.31	0.76	1.18	0.96	0.57	1.37	0.94	0.5	1.18	0.67
65	0.12	-0.24	0.21	-0.08	0.23	0.14	0.22	0.05	0.01	0.47	-0.23
70	-0.56	-0.03	-0.13	0.53	-0.18	0.56	0.29	0.11	-0.68	-0.09	0.1
75	0.26	-0.12	0.47	-0.21	-0.25	0.05	0.07	0.52	0.07	-0.34	0.07
80	0.73	-0.38	-0.78	0.1	0.56	0.26	-0.01	-0.09	-0.34	0.29	-0.45
85	0.29	-0.58	0.2	-0.38	-0.14	0.42	0.01	-0.11	0.4	0.18	0.47
90	0.39	-0.5	-0.82	-0.05	0.05	-0.23	0.85	-0.33	0.77	-0.11	0.24
95	-0.07	0.45	0.09	0.33	-0.1	0.84	0.3	0.52	-0.14	-0.19	-0.33
100	-0.4	0.15	0.16	0.3	0.09	0.04	0.41	0	-0.02	-0.29	0.77
105	0.16	-0.52	-0.01	0.25	0.09	0.91	-0.12	0.05	0.33	-0.93	0.32
110	-0.43	0.63	0.09	-0.03	0.01	0.26	0.54	0.1	-0.12	0.39	0.03
115	-0.16	0.79	0.29	0.1	0.16	0.49	-0.03	0.65	-0.27	0.88	0.01
120	0.55	0.32	-0.15	0.82	0.08	0.09	0.01	0.41	0.72	-0.21	0.13
125	0.65	-0.01	0.54	0.31	0.99	0.54	0.23	0.25	1.72	0.79	0.56
130	0.4	1.45	0.98	0.85	0.78	0.51	0.32	0.88	0.71	0.47	0.96

Luminaire

Lamp

No. of lamps 1
Lamp flux (lm) 203
Total flux (lm) 203

Voltage (V)
Current (A)
Power Factor

Report

24Filename 210805 DVP-24V-C90-R-5000K 60deg.jdt
0.108Operator
1Date 2021-08-05 오후 12:12:43

Luminous Intensity Data (Continued)

Maximum (cd) : 306

Minimum (cd) : -1

G/C	165	170	175	180	185	190	195	200	205	210	215
0	287.93	286.08	282.75	264.13	264.88	267.08	266.82	269.62	272.09	273.59	275.13
5	288.99	288.03	284.48	273.41	272.37	271.89	271.92	272.08	271.55	272.66	271.2
10	275.78	272.82	267.14	280.2	277.34	274.84	272.75	270.26	267.44	264	262.36
15	232.55	230.51	225.2	280.82	277.24	272.36	269.79	265.7	262.03	258.25	253.94
20	167.31	166.01	159.42	262.51	259.16	253.52	249.29	245.06	241.46	233.62	231.87
25	100.56	99.91	95.32	220.67	216.9	209.47	206.74	200.59	196.46	191	185.72
30	50.52	49.44	46.94	155.57	153.28	146.13	143.07	137.42	133.88	129.64	128.22
35	22.21	21.11	20.01	92.06	91.28	85.97	84.88	80.88	79.76	75.93	74.7
40	10.18	9.43	9.25	44.96	44.75	41.08	41.15	38.87	38.66	36.59	35.73
45	4.39	4.33	4.76	19.07	18.78	18.79	17.93	17.31	17.81	16.54	15.87
50	3.02	2.09	1.91	8.56	8.75	8.05	8.79	7.74	7.92	8.73	7.68
55	1.11	1.49	1.42	4.27	3.8	4.24	4.2	4.51	3.81	3.98	3.26
60	0.57	0.94	-0.09	2.46	2.27	2.11	1.86	1.98	2.31	1.46	2.11
65	-0.12	0.06	0.46	1.5	1.29	1.65	1.56	0.93	1.35	0.85	0.95
70	0.83	0.56	-0.36	1.14	0.55	0.25	0.81	0.51	0.57	0.55	0.12
75	0.76	0.32	-0.49	-0.05	0.5	-0.47	0.3	0.09	0.14	-0.01	0.14
80	-0.06	-0.08	0.98	0.04	-0.2	-0.21	-0.48	0.17	0.35	-0.42	0.33
85	0.12	0.12	0.58	-0.24	0.14	0.33	0.05	0	-0.09	0.12	0.25
90	-0.28	0.09	0.6	0.05	-0.7	0.17	-0.3	-0.64	0.4	0.37	0
95	0.11	-0.13	0.25	0.13	0.21	-0.02	0.85	0.22	-0.18	-0.03	-0.17
100	-0.14	0.2	0.48	-0.04	0.44	0.44	-0.52	-0.33	0.43	0.07	0.38
105	-0.21	0.17	0.74	0.14	-0.09	-0.21	0.5	-0.1	-0.01	0.3	0.85
110	0.21	-0.29	0.32	0.28	0.19	0	-0.12	0.26	-0.14	0.67	-0.15
115	0.66	-0.07	0.15	0.1	-0.14	0.42	-0.12	0.34	-0.06	0.24	0.15
120	-0.02	0.22	0.27	0.48	0.23	-0.23	0.74	-0.17	-0.05	1.21	0.47
125	0.7	-0.16	1.11	0.16	-0.37	0.21	0.58	0.45	0.47	0.69	-0.36
130	0.45	0.7	0.35	0.27	0.28	0.59	0.84	0.11	0.24	0.51	-0.03

Luminaire

Lamp

Report

No. of lamps	1	Voltage (V)	24	Filename	210805 DVP-24V-C90-R-5000K 60deg.jdt
Lamp flux (lm)	203	Current (A)	0.10	Operator	
Total flux (lm)	203	Power Factor	1	Date	2021-08-05 오후 12:12:43

Luminous Intensity Data (Continued)

Maximum (cd) : 306

Minimum (cd) : -1

G/C	220	225	230	235	240	245	250	255	260	265	270
0	278.61	279.02	281.1	282.4	283.78	286.32	290.61	289.9	290.76	293.04	292.98
5	271.08	273.23	271.82	272.38	272.26	272.39	271.08	272.1	272.07	272.51	272.58
10	259.62	258.86	256.54	254.25	252.05	251.41	248.39	249.79	245.95	246.23	244.59
15	248.84	244.05	240.61	236.19	231.94	228.36	226.25	224.15	218.75	219.09	216.55
20	226.13	222.73	217.31	212.29	208.26	205.06	201.45	198.32	194.61	193.7	192.25
25	181.8	178.93	173.08	172.24	167.4	166.95	163.92	161.61	159.19	161.12	159.13
30	122.59	121.76	117.19	116.33	113.45	113.78	110.83	112.13	109.23	110.2	109.05
35	71.54	70.45	65.87	66.02	63.22	63.71	60.42	60.43	58.2	59.29	57.31
40	34.06	32.81	31.24	30.84	29.08	28.26	27.17	27.4	26.06	27.21	25.72
45	15.62	14.97	13.97	14.12	12.02	13.2	12.58	12.4	11.87	11.43	11.28
50	7.32	7.2	7.52	6.58	6.12	5.77	5.59	6.23	5.86	5.81	5.47
55	3.44	3.02	3.71	2.72	3.46	2.96	2.89	3.04	2.44	2.67	2.14
60	1.38	1.99	2.35	1.26	1.86	1.09	2.53	1.84	1.11	1.52	1.14
65	-0.05	0.94	1.07	1.18	0.68	0.87	1.01	0.9	-0.13	1.16	0.38
70	0.02	0.14	0.21	0.46	0.54	0.25	0.59	0.24	-0.29	0.7	-0.11
75	-0.47	-0.54	0.08	0.29	0	0.05	-0.14	0.15	0.02	0.4	-0.43
80	0.14	0.34	0.17	-0.06	0.53	-0.07	0.1	0.26	0.15	0.09	0.36
85	-0.23	-0.34	0.5	-0.59	0.23	0.23	0.79	-0.33	0.22	0.6	-0.06
90	-0.16	-0.8	0.34	-0.53	-0.51	-0.05	-0.1	-0.39	-0.18	-0.19	-0.17
95	0.42	0.14	0.07	0.57	-0.17	-0.07	-0.03	-0.25	-0.04	0.06	0.48
100	-0.77	0.47	0.2	-0.17	0.09	-0.08	-0.36	0.17	-0.05	-0.4	-0.03
105	0.24	0.19	-0.04	-0.4	-0.22	0.09	0.6	0.09	0.5	-0.04	0.11
110	0.07	-0.14	0.24	-0.01	0.17	0.05	-0.17	-0.02	-0.56	0.48	0.01
115	0.33	0.46	0.14	0.42	0.74	-0.02	-0.15	0.47	0.18	0.79	-0.68
120	0.22	-0.37	0.23	-0.61	0.91	0.28	0.05	0	0.44	-0.08	0.78
125	0.35	0.26	0.66	0.44	0.29	-0.05	0.07	0.2	0.26	0.46	0.5
130	0.26	1.21	0.56	0.47	0.58	1.1	0.31	-0.02	1.02	-0.47	1.26

Luminaire

Lamp

Report

No. of lamps	1	Voltage (V)	24	Filename	210805 DVP-24V-C90-R-5000K 60deg.jdt
Lamp flux (lm)	203	Current (A)	0.10	Operator	
Total flux (lm)	203	Power Factor	1	Date	2021-08-05 오후 12:12:43

Luminous Intensity Data (Continued)

Maximum (cd) : 306

Minimum (cd) : -1

G/C	275	280	285	290	295	300	305	310	315	320	325
0	293.63	294.49	294.77	294.74	296.23	295.63	295.16	294.86	293.68	293.19	292.89
5	272.76	272.26	274.68	273.11	275.2	273.64	274.09	274.12	274.58	273.52	274.67
10	243.63	244.72	244.97	244.39	245.96	246.57	248.15	248.74	250.61	251.86	253.1
15	216.69	215.69	217.07	217.19	219.61	222.08	224.09	226.22	229.7	232.4	236.04
20	191.95	191.89	193.23	193.55	196.92	199.03	201.97	204.54	208.38	211.1	215.06
25	159.15	159.19	160.62	161.02	161.4	164.14	166.84	168.18	170.93	172.65	176.85
30	111.03	110.59	112.42	113.58	115.71	115.77	119.23	119.5	123.52	124.34	127.73
35	59.3	58.64	60.78	59.28	61.95	61.73	64.7	63.77	67.71	67.93	70.7
40	26.29	25.5	26.14	26.35	27.65	27.35	28.99	28.92	31.2	30.82	33.14
45	11.73	10.71	12	11.31	12.38	12.24	12.98	12.68	13.55	13.79	14.86
50	6.06	4.76	5.96	5.22	6.13	5.08	5.95	6.51	6.12	6.97	7.13
55	2.72	2.3	2.04	2.96	2.57	2.44	2.37	2.58	3.89	3.48	3.43
60	1.62	1.81	1.06	0.81	1.48	1.71	1.68	1.34	1.39	1.8	1
65	0.96	0.22	0.18	1.12	1.33	1.05	1.12	0.64	1.29	0.82	0.44
70	-0.12	1.05	0.01	0.1	0.24	0	0.01	0.4	0.44	0	0.54
75	-0.02	-0.15	-0.42	-0.01	0.1	0.69	-0.42	-0.52	0.01	0.31	0
80	-0.31	-0.48	0.09	0.67	0.53	-0.05	-0.76	-0.38	-0.39	0.71	0.01
85	0.32	0.69	-0.07	0.69	-0.18	-0.23	-0.27	-0.08	0.28	-0.69	-0.3
90	-0.11	0.3	0.71	0.07	-0.03	-0.31	-0.28	0.73	0.28	0.31	-0.34
95	-0.42	-0.12	0.49	-0.25	-0.42	-0.62	-0.4	0.23	0.49	0.27	0.2
100	0.39	0.08	-0.3	0.24	0.03	-0.35	-0.44	0.5	0.45	0.39	0
105	-0.4	-0.37	0	-0.35	-0.43	0.13	-0.16	0.08	0.66	0.2	-0.42
110	0.09	0.4	-0.42	0.05	0.48	0.74	0.33	0.12	0.6	0.14	0.75
115	0.28	0.41	0.5	-0.54	-0.43	0.09	0.81	0.07	-0.03	0.3	0.29
120	0.95	0.19	-0.02	-0.06	-0.51	0.52	0.35	-0.41	-0.16	0.4	0.33
125	0.64	0.67	0.72	-0.15	0.53	0.08	0.35	0.46	0.62	0.13	0.8
130	0.77	0.28	0	0.03	1.11	0.17	0.44	1.07	0.44	0.39	0.01

Luminaire

Lamp

Report

No. of lamps	1	Voltage (V)	24	Filename 210805 DVP-24V-C90-R-5000K 60deg.jdt
Lamp flux (lm)	203	Current (A)	0.10	Operator
Total flux (lm)	203	Power Factor	1	Date 2021-08-05 오후 12:12:43

Luminous Intensity Data (Continued)

Maximum (cd) : 306

Minimum (cd) : -1

G/C	330	335	340	345	350	355	360
0	290.06	287.81	289.87	287.93	286.08	282.75	264.13
5	272.1	275	278.61	275.58	273.31	275.5	254.29
10	254.34	256.14	257.34	258.53	261.62	263.15	236.98
15	238.98	241.11	243.48	246.09	249.22	250.77	200.04
20	217.42	222.41	224.87	228.34	230.1	234.18	147.46
25	178.05	183.22	185.29	189.57	193.31	196.82	83.31
30	128.09	132.3	133.43	137.81	138.98	143.52	39.87
35	70.75	73.7	74.51	77.96	77.23	80.73	17.71
40	32.64	34.88	34.99	37.22	36.85	38.94	8.91
45	15.17	15.93	16.01	16.58	17	16.97	3.33
50	7.86	7.48	7.84	7.99	8.38	7.92	1.93
55	3.59	3.8	2.82	3.86	4.19	4.26	1.52
60	1.51	1.09	1.88	2.03	2.32	1.29	0.55
65	0.45	0.15	1.71	0.8	1.21	0.54	-0.83
70	0.4	0.39	0.88	0.73	0.97	0.56	-0.56
75	-0.44	-0.19	1.11	0.45	-0.21	0.74	0
80	0.33	-0.04	-0.26	0.53	-0.26	-0.39	-0.33
85	0.04	-0.16	0.09	0.07	-0.44	0.01	-0.14
90	0.59	-0.02	0.16	-0.4	0.41	0.13	-0.21
95	0.14	-0.32	-0.31	-0.43	-0.49	-0.39	0.36
100	0.12	-0.31	0.04	0.37	-0.32	-0.58	-0.04
105	-0.28	0.75	0.03	-0.29	-0.41	0.05	0.25
110	0.4	-0.07	0.04	0.47	0.2	0.03	-0.28
115	0.11	0.47	-0.01	-0.03	-0.24	-0.21	0.29
120	-0.03	0.29	0.34	0.26	0.5	0.1	0.53
125	-0.36	0.85	0.46	0.09	0.17	0.45	0.62
130	0.03	0.4	0.59	0.6	0.02	0.31	1.16

Luminaire

Lamp

No. of lamps	1	Voltage (V)	24	Filename	210805 DVP-24V-C90-R-5000K 60deg.jdt
Lamp flux (lm)	203	Current (A)	0.10	Operator	
Total flux (lm)	203	Power Factor	1	Date	2021-08-05 오후 12:12:43

Luminous Flux Table

Total Lamp Lumens:	203
Luminaire Efficiency (lm/W):	202.64
CIE Classification:	Direct

Elevation	Lumens	Cumulative	Lamp %	Luminaire %
0	1.71	1.71	0.84	0.84
5	13.41	15.11	7.46	7.46
10	25.33	40.44	19.96	19.96
15	33.98	74.42	36.73	36.72
20	37.44	111.86	55.21	55.20
25	33.61	145.47	71.80	71.79
30	25.15	170.61	84.21	84.19
35	15.23	185.84	91.73	91.71
40	7.97	193.81	95.66	95.64
45	3.96	197.77	97.62	97.60
50	2.07	199.85	98.64	98.62
55	1.12	200.97	99.20	99.18
60	0.60	201.57	99.49	99.47
65	0.24	201.80	99.61	99.59
70	0.12	201.92	99.66	99.64
75	0.00	201.92	99.67	99.65
80	0.01	201.93	99.67	99.65
85	0.02	201.95	99.68	99.66
90	0.02	201.97	99.69	99.67
95	0.03	201.99	99.70	99.68
100	0.00	201.99	99.70	99.68
105	0.01	202.00	99.71	99.69
110	0.09	202.09	99.75	99.73
115	0.12	202.21	99.81	99.79
120	0.11	202.32	99.86	99.84
125	0.20	202.52	99.96	99.94
130	0.12	202.64	100.02	100.00

Luminaire

Lamp

Report

No. of lamps 1

Voltage (V)

24Filename 210805 DVP-24V-C90-R-5000K 60deg.jdt

Lamp flux (lm) 203

Current (A)

0.10Operator

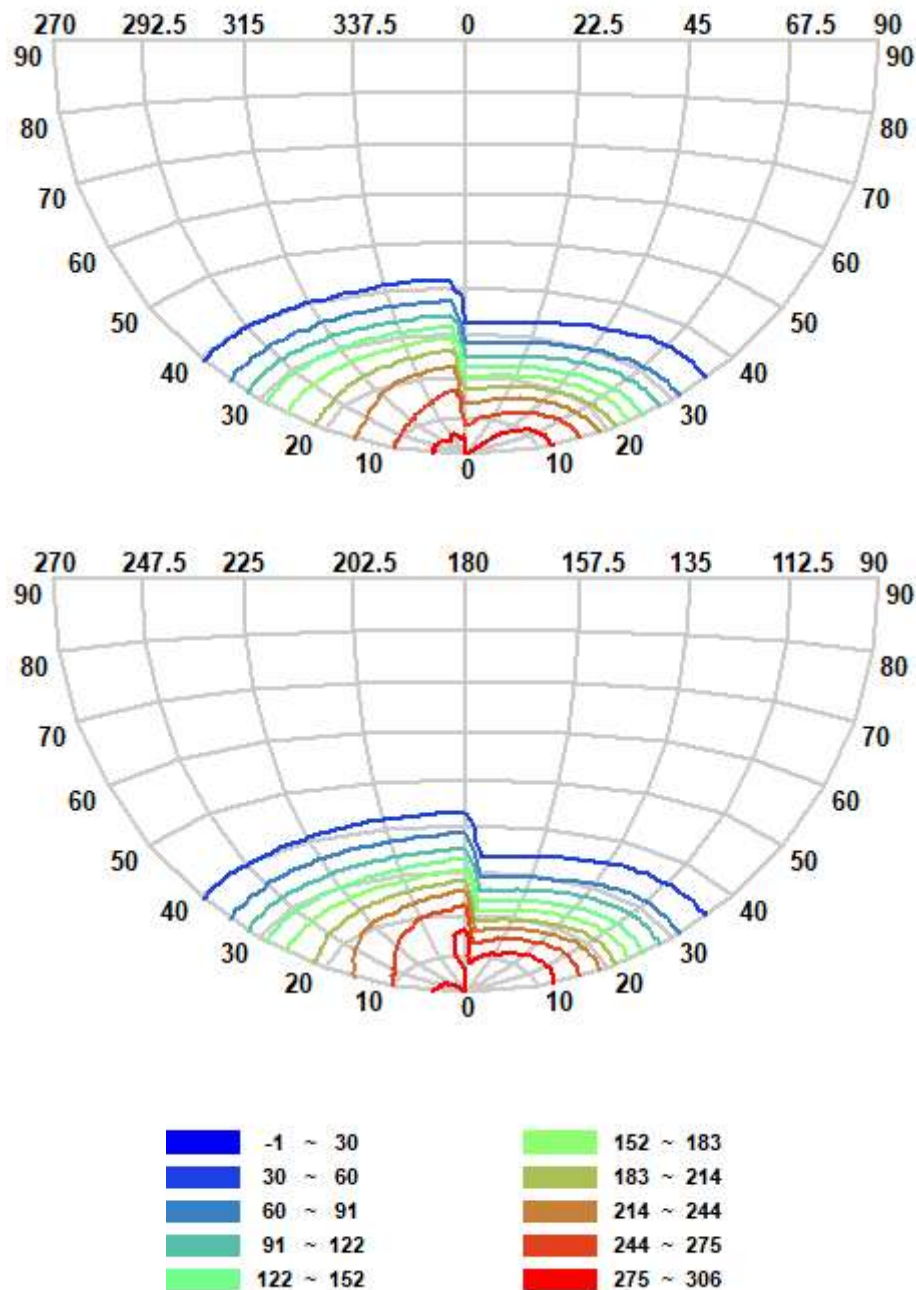
Total flux (lm) 203

Power Factor

1Date

2021-08-05 오후 12:12:43

IsoCandela (Type C)



Luminaire

Lamp

Report

No. of lamps 1

Voltage (V)

24Filename 210805 DVP-24V-C90-R-5000K 60deg.jdt

Lamp flux (lm) 203

Current (A)

0.10Operator

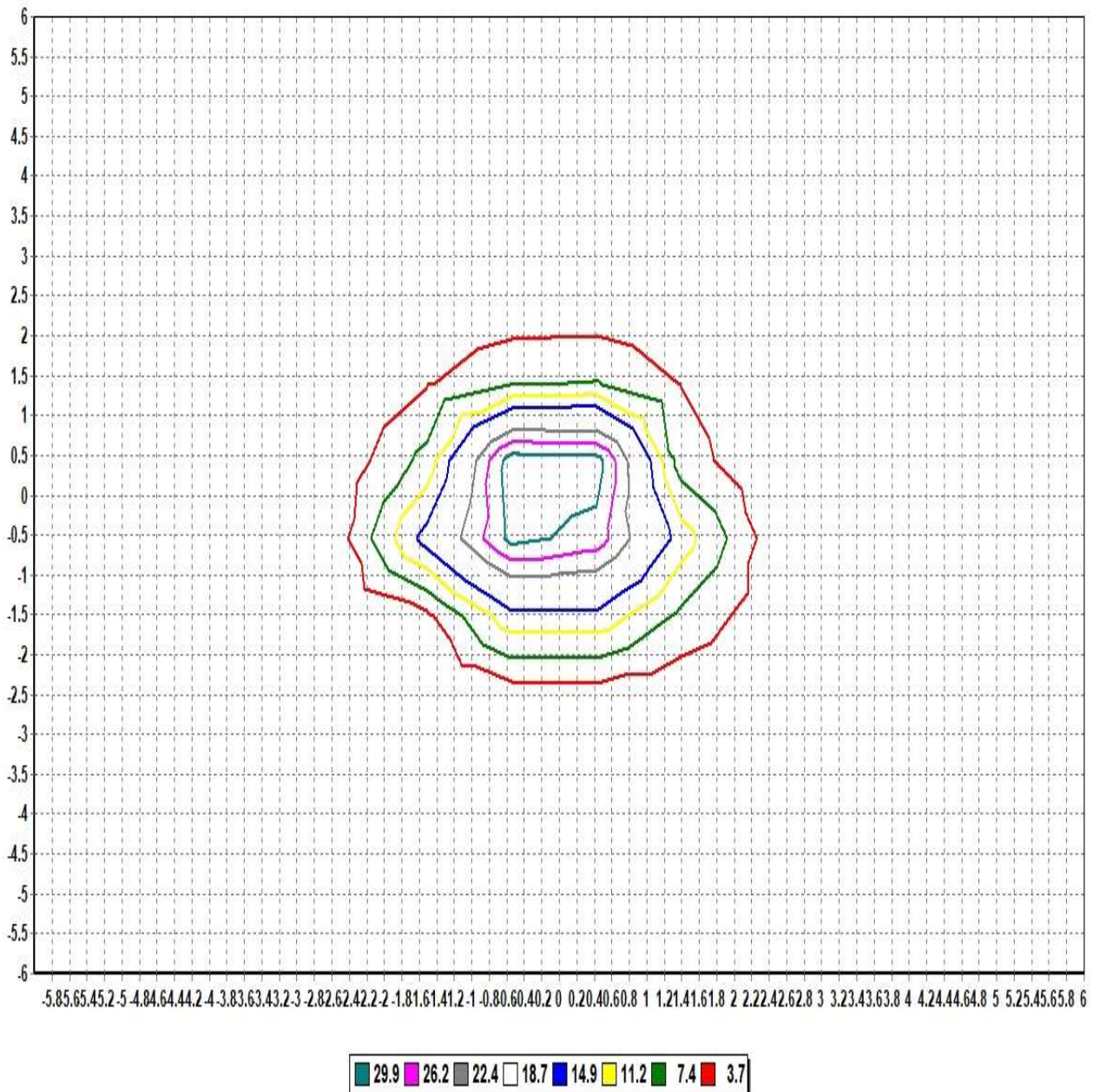
Total flux (lm) 203

Power Factor

1Date

2021-08-05 오후 12:12:43

IsoLux Diagram (Ground)



Pole Height (m): 2.7

Area Width (m): 12

Total Optical Solution Provider

Luminaire

Lamp

Report

No. of lamps 1

Voltage (V)

24Filename 210805 DVP-24V-C90-R-5000K 60deg.jdt

Lamp flux (lm) 203

Current (A)

0.10Operator

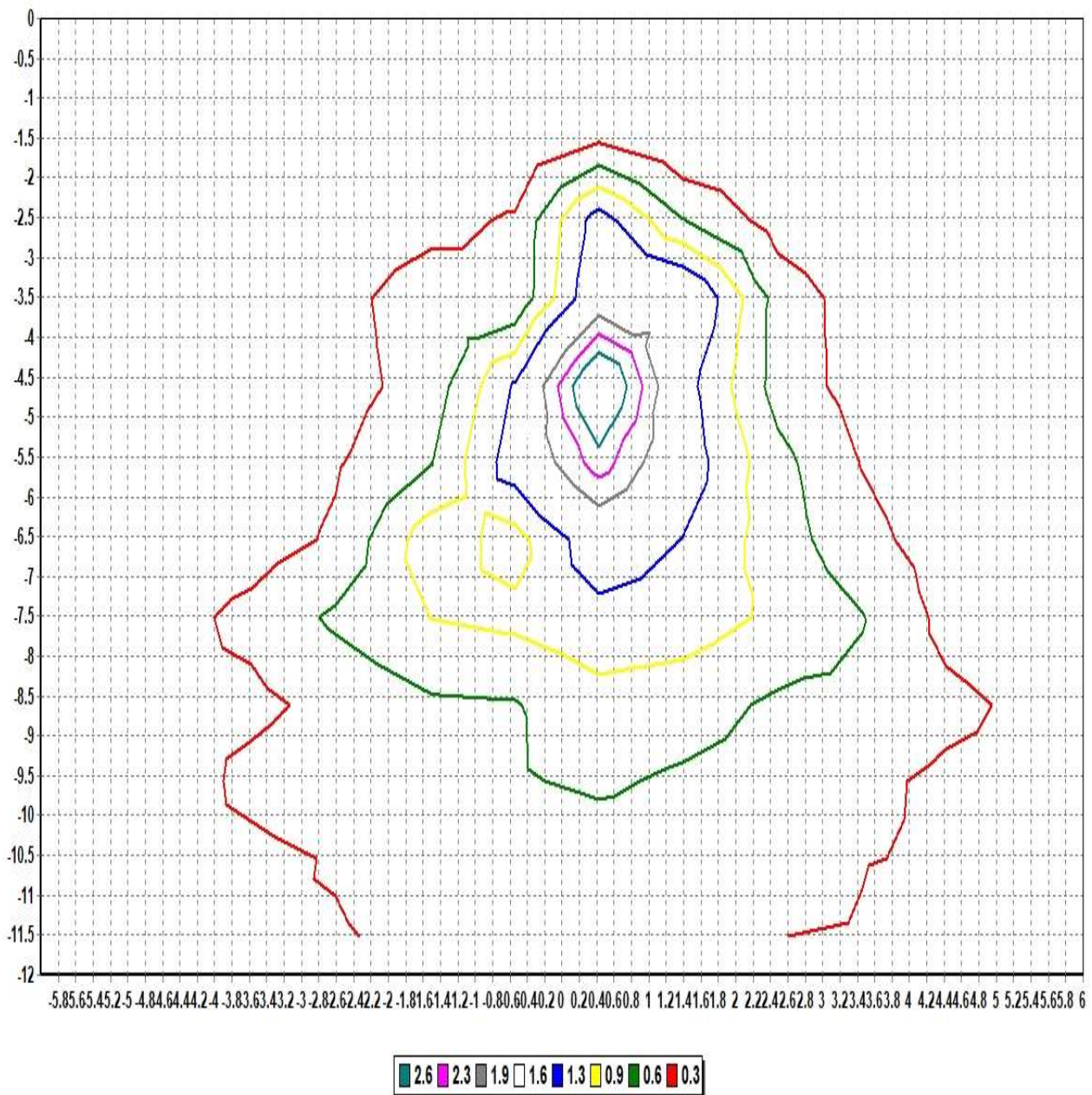
Total flux (lm) 203

Power Factor

1Date

2021-08-05 오후 12:12:43

IsoLux Diagram (Wall)



Pole Height (m): 2.7

Wall Distance (m): 2.7

Aiming Plane: 0

Wall Height (m): 12

Total Optical Solution Provider



Luminaire

Lamp

No. of lamps	1	Voltage (V)	24
Lamp flux (lm)	203	Current (A)	0.108
Total flux (lm)	203	Power Factor	1

Report

Filename 210805 DVP-24V-C90-R-5000K 60deg.jdt

Operator

Date 2021-08-05 오후 12:12:43

Illuminance Levels (Ground)

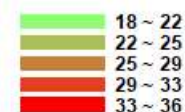
6.00	0.00	0.00	0.00	0.00	0.01	0.01	0.01	0.01	0.01	0.00	0.00	0.00	0.00
5.00	0.00	0.00	0.01	0.00	0.00	0.03	0.03	0.02	0.01	0.01	0.00	0.00	0.00
4.00	0.00	0.00	0.00	0.02	0.02	0.07	0.07	0.07	0.03	0.02	-0.01	0.01	0.00
3.00	0.00	0.01	0.02	0.03	0.07	0.13	0.17	0.14	0.06	0.02	0.02	0.01	0.00
2.00	0.01	0.00	0.02	0.07	0.53	1.00	4.08	1.05	0.53	0.06	0.02	0.00	0.00
1.00	0.00	0.02	0.04	0.10	0.78	8.70	28.53	7.79	0.68	0.11	0.05	0.01	0.01
0.00	0.02	0.05	0.19	0.52	9.69	31.63	36.23	22.24	2.36	0.10	0.04	0.02	0.00
-1.00	0.02	0.05	0.16	0.34	2.62	14.18	24.32	13.91	2.32	0.32	0.14	0.05	0.02
-2.00	0.01	0.02	0.05	0.15	1.27	1.95	6.64	1.83	1.20	0.14	0.03	0.02	0.01
-3.00	0.01	0.02	0.04	0.05	0.14	0.24	0.32	0.23	0.11	0.06	0.04	0.01	0.00
-4.00	0.00	0.01	0.01	0.04	0.03	0.11	0.12	0.10	0.03	0.03	0.01	0.01	0.00
-5.00	0.00	0.00	0.01	0.02	0.02	0.03	0.03	0.03	0.01	0.02	0.01	0.00	0.01
-6.00	0.00	0.00	0.00	0.00	0.01	0.01	0.01	0.01	0.01	0.00	0.00	0.00	0.00
-6.00	-5.00	-4.00	-3.00	-2.00	-1.00	0.00	1.00	2.00	3.00	4.00	5.00	6.00	

Illum. (Max.) : 36.2

Illum. (Min.) : -0.01

Illum. (Avg.) : 1.37

All illuminance level values are in lux.



Luminaire

Lamp

Report

No. of lamps 1

Voltage (V)

24Filename 210805 DVP-24V-C90-R-5000K 60deg.jdt

Lamp flux (lm) 203

Current (A)

0.10Operator

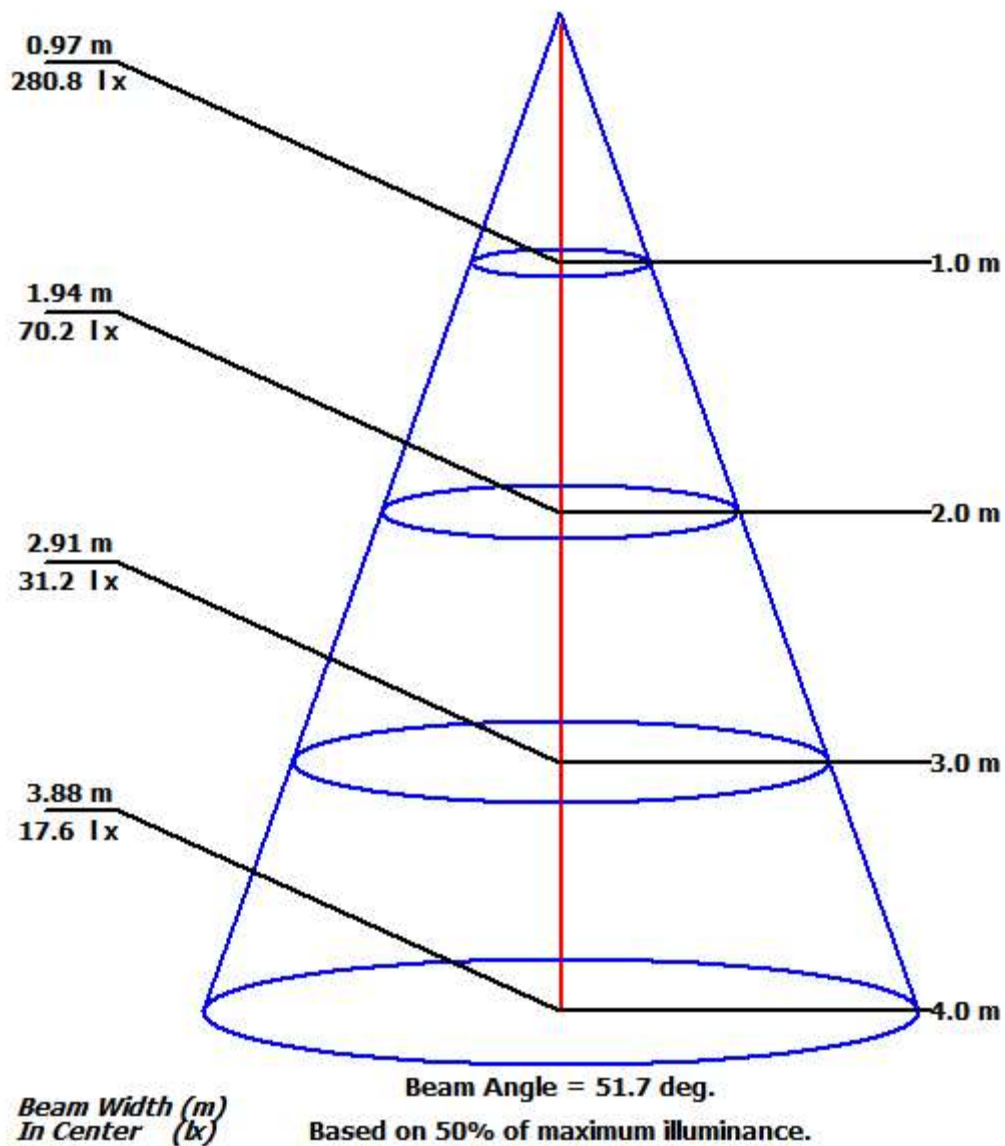
Total flux (lm) 203

Power Factor

1Date

2021-08-05 오후 12:12:43

Illuminance Cone Diagram





Luminaire

Lamp

No. of lamps	1	Voltage (V)	24
Lamp flux (lm)	203	Current (A)	0.108
Total flux (lm)	203	Power Factor	1

Report

Filename 210805 DVP-24V-C90-R-5000K 60deg.jdt

Operator

Date 2021-08-05 오후 12:12:43

Coefficient of Utilization

	Refl. Ceiling (%)	80%	80%	80%	70%	70%	70%	50%	50%	50%	30%	30%	30%	10%	10%	10%	0%
	Refl. Wall (%)	50%	30%	10%	50%	30%	10%	50%	30%	10%	50%	30%	10%	50%	30%	10%	0%
Eff. Floor Cavity Refl.		20%	20%	20%	20%	20%	20%	20%	20%	20%	20%	20%	20%	20%	20%	20%	20%
Room CR 0		1.13	1.13	1.13	1.10	1.10	1.10	1.05	1.05	1.05	1.00	1.00	1.00	0.96	0.96	0.96	0.94
Room CR 1		1.06	1.03	1.01	1.03	1.02	1.00	1.00	0.98	0.97	0.96	0.95	0.94	0.93	0.92	0.91	0.89
Room CR 2		0.99	0.96	0.93	0.97	0.94	0.91	0.94	0.92	0.89	0.91	0.89	0.87	0.89	0.87	0.85	0.84
Room CR 3		0.93	0.89	0.85	0.92	0.88	0.85	0.89	0.86	0.83	0.87	0.84	0.82	0.85	0.82	0.80	0.79
Room CR 4		0.88	0.83	0.79	0.87	0.82	0.79	0.85	0.81	0.78	0.83	0.79	0.77	0.81	0.78	0.76	0.75
Room CR 5		0.83	0.78	0.74	0.82	0.77	0.74	0.80	0.76	0.73	0.79	0.75	0.72	0.77	0.74	0.72	0.70
Room CR 6		0.78	0.73	0.70	0.78	0.73	0.69	0.76	0.72	0.69	0.75	0.71	0.68	0.74	0.70	0.68	0.67
Room CR 7		0.74	0.69	0.66	0.74	0.69	0.65	0.72	0.68	0.65	0.71	0.67	0.65	0.70	0.67	0.64	0.63
Room CR 8		0.71	0.65	0.62	0.70	0.65	0.62	0.69	0.65	0.61	0.68	0.64	0.61	0.67	0.64	0.61	0.60
Room CR 9		0.67	0.62	0.59	0.67	0.62	0.59	0.66	0.61	0.58	0.65	0.61	0.58	0.64	0.61	0.58	0.57
Room CR 10		0.64	0.59	0.56	0.64	0.59	0.56	0.63	0.59	0.55	0.62	0.58	0.55	0.61	0.58	0.55	0.54

